



EncircaSM Yield

Nitrogen Management Service

Planning and Prescriptions that Profit

Managing Risk to Boost Your Return.

Profitable farming is about managing risk to maximize your return. Nitrogen is a key input, and the most difficult to manage field by field, leading to under and over application – literally spreading profit loss across your operation.

EncircaSM Yield Nitrogen Management Service is Here.

The EncircaSM Yield Nitrogen Management Service is based on our strong agronomic expertise, combined with strategic partnerships that redefine soils and crop modeling and fueled by an exclusive hyper-local weather network.

The EncircaSM Yield Nitrogen Management Service provides an advanced solution with the potential to increase profitability through real-time actionable insights and field-by-field recommendations from fall application through pollination.

Encirca Certified Services Agent

Coupled with our advanced technologies, we've built a dedicated workforce of professionals to assist you every step of the way.

Your local Encirca Certified Services Agent is versed in the industry-leading technology and analytics we provide. Your Encirca Certified Services Agent will provide you with plans customized to your fields and conditions. They also consult with you to interpret the dynamic information available as the environment changes. Working with you to determine the best management practices to apply the right amounts, at the right time and achieve the most profitable yield.

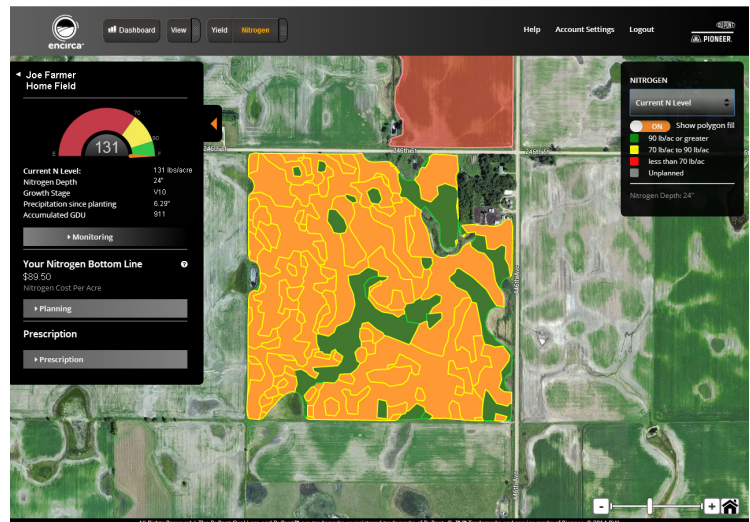
Contact your Encirca Certified Services Agent Today.

Our Encirca Certified Services Agents will tailor the Nitrogen Management Service to your unique needs; call today to unlock the full potential of your operation.

Find your Encirca Certified Services Agent at 1-844-744-7333

Visit encirca.pioneer.com

 Follow Us @Encircaservices





EncircaSM Yield

Nitrogen Management Service

Planning and Prescriptions that Profit

EncircaSM Yield Enabling Technologies

Environmental Response Units (ERUs)

Encirca Yield provides more accurate soil data through first-of-a-kind ERUs, developed through collaboration with the USDA, University of Missouri and DuPont Pioneer.

ERUs are essential to maximizing returns on key inputs assisted by on-farm variable rate technology.

The Nitrogen Model

Our proprietary Nitrogen model mimics crop production through the season and utilizes wireless data transfer to instantly access accurate information from the cab, such as planting and harvest information, to make timely decisions.

This continuous approach to Nitrogen management uses accurate hyper-local weather, high resolution soils and grower management information that affect how soil and plants respond to applications to help you manage scenarios that provide the right inputs for the most profits.

Easy to Use and Mobile by Design

Simple and Flexible. What good is data if you can't access or make sense of the information when you need to make a decision?

For the first time, you can see your field information in a manner that allows you to easily adjust scenarios to plan for the future through the model's predictive analysis features.

You can also see your Nitrogen levels as the environment changes and make decisions based on dynamic information, not just intuition. Seamlessly run scenarios to manage the possibilities.

No Two Fields are Alike... And No One has an Integrated Solution like Ours

For decades products from DuPont Pioneer have been planted on millions of acres of farmland. Coupled with our science, research, expert agronomy and service professionals, only Encirca services can bring you the integrated service solution expertise we provide.

To Learn more about Encirca Yield visit encirca.pioneer.com

Find your Certified Services Agent at 1-844-744-7333

 Follow Us @Encircaservices

